

Per Year \$1.00
Six Months 50 Cents
Three Months, 25 Cents

The Socialist

To Organize the Slaves of Capital to Vote Their Own Emancipation

Ninth Year--No. 391

Seattle, Washington, Saturday, September 5, 1908

Price Five Cents

WHO PAYS FOR "THE SPECIAL"?
OUR REPLY TO SAMUEL GOMPERS' CHALLENGE

PORTLAND, SEPT. 14
SEATTLE, SEPT. 15
SPOKANE, SEPT. 16

Full Time-Table for the "Red Special" - Watch for it at Every Railroad Station

Stops and exact times - A 1001--MONDAY. Chicago--Leave La Salle street station...

THREE MORE RED SPECIALS

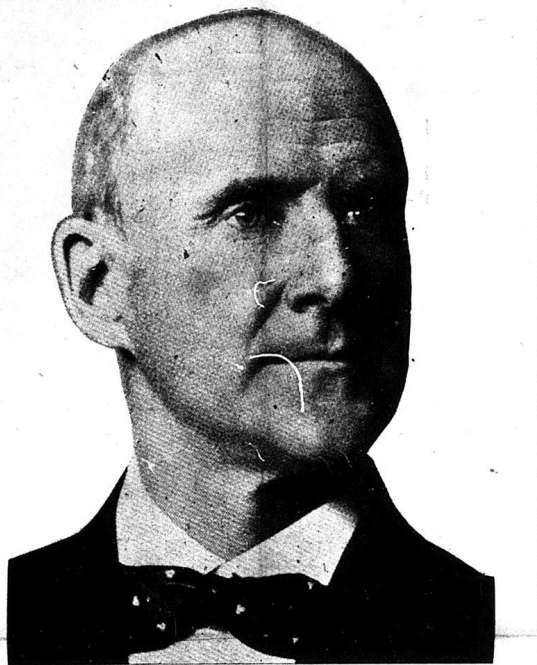
On October 2 "The Socialist" will be a "Special Idaho Campaign Edition" and will contain matter...

From this time on we will report each week the orders received for the Special Idaho Edition. Remember, it is to appear October 2.

On October 10 we will issue a "Special Oregon Campaign Edition" devoted to the Presidential election in that state.

On October 17 we will issue a "Special Washington Campaign Edition" devoted to the election in that state.

"The Call" the new New York Socialist Daily paper and "The Socialist" met both one year for \$2.50, regular price, \$4.00.



DEBS' DIGNIFIED STATEMENT

Published by the New York "Evening World" August 19

The Socialist never sees anything but victory ahead. Even when the vote is small, and outward indications might, to the average beholder, carry but little hope, the Socialist sees nothing but ultimate triumph.

The truth of his position is seen in the development of the worldwide Socialist movement within the past thirty years, and in the recognition of the power of Socialism by thoughtful men everywhere.

Non-Socialists are not expected to see this. But they do begin to recognize the way events are shaping themselves.

But it was not until this campaign that Socialism was mentioned in the platform of a dominant party. That it should be given a large place in the Republican platform this year shows that the battle lines forecasted by Mr. Hanna are already being drawn.

And yet the Socialist is not a visionary. He believes in the future, just as much as the inventor believes in the machine which as yet exists only in his brain, because he has figured it out on scientific principles and KNOWS that it will work.

Soilism Logical Development. The truth of his position is seen in the development of the worldwide Socialist movement within the past thirty years, and in the recognition of the power of Socialism by thoughtful men everywhere.

Republican Party's Strength. But the Republican party, frankly representing the capitalist class from the time this class overpowered the slave-owning class until now, when it has half the voters of the country working for it and depending on it for a job, and half the farmers either tenants or borrowers from it, has grown in power because it has represented something definite, even though bad, and has stood for a class that was growing instead of decaying.

The present campaign is the last political stand of the middle class, and after it is over the Democratic party, which has been disintegrating for the past dozen years, will rapidly reach dissolution, while the Socialist party will remain as the logical and living opponent of Republicanism.

a majority of the people of America to dependence on it for a job, while the Socialist party is the avowed enemy of wages and profits and the exponent of every man owning himself by virtue of owning his job.

But, as a system, it was not a controlling force. The frontier enabled the wage-worker to escape from his position and to become what was then not inappropriately called an independent farmer.

Soilism Workman's Champion. Socialism arises as the champion of the growing working class. Even the farmer is becoming a wage-worker to a large extent, as the machinery of the farm is growing and making it impossible for a man of small capital to work as extensively and efficiently as can the wealthy farmer.

Continued on Page Three

Samuel Gompers has a vile attack on Eugene V. Debs in the September "Federalist." Gompers evidently is having a thorny road leading Union Labor into the Bryan den of thieves. He is mad as a lunatic.

GOMPERS' INFAMOUS CHARGE

SIX THOUSAND DOLLARS IN TWENTY-FIVE DAYS

- REPORT OF ALL CASE CONTRIBUTIONS
Received at the National Office for the Socialist Special Train up to and including August 15th, 1908. The first train car was issued July 12th, 1908. First contributions received July 12th, 1908.

